

PRODUCT CATALOGUE

Henan Greenleafy Agricultural Technology Co.,Ltd



Greenleafy

Contents 目录

Single span greenhouse	04
Multi-span greenhouse	05
Blackout greenhouse	06
Film cover & PC sheet cover & Frp roofing sheet	09
Felt Grow Bags & Plastic Grow Bags	11
Ground Cover	12
Irrigation system	13
Cooling & Heating system	15
Ventilation system	16
Shade net system	17
Insect net & Spring Clip and Channel	18
Dehumidifier & Humidifier	20
Integrated Water and Fertilizer Machine	21
Customer's feedback	23

Who We Are?

Henan Greenleafy Agricultural Technology Co., Ltd
GREENHOUSE · BENCH · HYDROPONIC SYSTEM EXPERT

Providing professional greenhouse, bench, and hydroponic equipment manufacturing solutions.

We are an integrated industry and trade enterprise specializing in the R&D, production, and installation of advanced agricultural equipment. We are dedicated to providing turn-key custom solutions for modern horticulture, including commercial greenhouses, seedling benches, and hydroponic cultivation systems.

Specializing in the production of greenhouse structures, professional benching systems, and high-efficiency hydroponic equipment, we have successfully custom-fabricated and implemented complete turnkey growing systems for numerous agricultural projects, commercial farms, and research institutions worldwide.

Since 2012, on the level and quality of agricultural technology manufacturing, now Henan Greenleafy has been committed to approaching global top standards, serving growers with integrity and expertise!



Single span greenhouse



Arched greenhouse



Sawtooth greenhouse



Gothic greenhouse



Top vent greenhouse

Introduction

Single-span tunnel greenhouses are suitable for cultivating tomatoes, peppers, eggplants, lettuce, succulents, orchids, fruit tree seedlings, medicinal herbs, hydroponic growing, and more. Composed by hot galvanized pipe with film for the covering material. The main arch pipe according to the wind load and snow load, there are 25*1.5mm,32*1.5mm,40*2mm,48*2mm,60*2mm and so on. **We can customized according to your needs!**

◆ Material / Specification

Material	Hot galvanized 275g/m ² zinc coated
Cover	Film & PC sheet & shade net & insect net cover
Hot sell size	30*8m, 40*8m, 50*8m, 60*8m and customized
Standard Components	Hot galvanized 275g/m ² zinc coated structure
	150 microns Film cover
	Two sides ventilation system
	40 mesh Insect net
	Lock channel & Z Wiggle wire
	Sliding Doors
	Film-Pressing Line, Duckbill Clip, Film-Pressing Clip Film Rolling Device, Top Compression Spring, Self-Tapping Screw, Clamp, Screw

Multi-span greenhouse



Arch multi-span greenhouse



Sawtooth multi-span greenhouse



Gothic greenhouse

Introduction

The arched-top design is one of the most common greenhouses style, usually covered by plastic film or pc sheets; can provide year-round production for propagation and growing; protects and warmth your plants under heavy climatic conditions.

The Sawtooth design combines optimal ventilation (supplied with a permanent ventilation opening on top) with special strength for withstanding different loads; the shape of the arches allows excellent light transmission, especially good under tropical and desert

This greenhouse is peak roof, design allow you to maximize the amount of usable growing space. In addition, snow and rain can slide down quickly So that it is strong and durable with exceptional resistance on high snow and wind loads.

◆ Structure

Material	Hot galvanized 275g/m2 zinc coated
Cover	Film & PC sheet & shade net & insect net cover
Hot sell size	16*32m, 48*48, 64*64m, 72*72m, 96*100m and so on.
Width	8/9.6/12m for every span and customized
Length	20-200m
Wall height	2-5m, can customized
Top height	3.5-7m, can customized
Arch distance	1m, 1.5m, 2m and so on

We can customize the equipment according to your requirements

Blackout greenhouse

Introduction



Blackout greenhouse is suitable for sensitive plants requiring photo period control, such as Medical plants, or seeding, vegetables, flowers, etc. 100% light deprivation

Greenhouse framework:

Hot galvanized steel framework, with 275g/m² zinc coated, anti-rust for about 15 years.

The main arch pipe according to the wind load and snow load, there are 40mm, 50mm, 60mm and so on

Features:

1. Hot galvanized steel framework with 275g/sqm zinc coated, anti-rust, life time is over 15 years
2. PEP 150 micron film, anti-drip, anti-fog, anti-UV, life time 4-5 years
3. Three layers blackout curtain, 100% stop the light get into the greenhouse, life time 5-10 years
4. Two sides ventilation with insect net
5. Provide install drawing, install files, install photos and 24 hours online guild install.

◆ Structure

Product Name	Blackout Greenhouse
Length	10-100m
Width	6-12m
Shoulder height	2-4m
Top height	4.5-7m
Arch distance	1m, 1.5m and 2m, customized
Components	Greenhouse structure, film cover, blackout systems, sides ventilation, door
Usage	Medical hemp, chrysanthemum and other Light-sensitive plants
We can customize the equipment according to your requirements	

Greenhouse accessories--film cover



Functional Use

This product is suitable for covering various types of greenhouses, including those used for vegetables, fruits, flowers, seedling cultivation, and agritourism/pick-your-own activities.

PO film is available in a variety of thicknesses and is manufactured using raw materials that provide anti-drip, anti-fog, and UV-resistant properties. It features high light transmittance, excellent thermal insulation, and strong resistance to aging; furthermore, its width, thickness, specific functions, and service life can all be customized to meet the client's specific requirements.

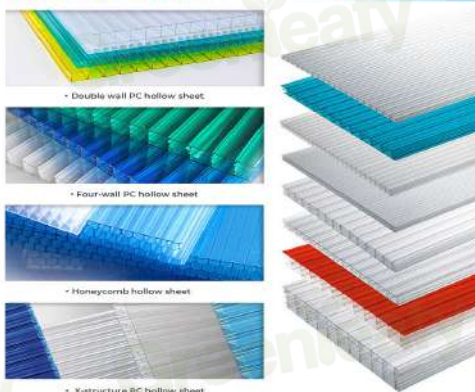


◆ Specification Parameter

film cover for agriculture greenhouse	Product name
100/150/200/240 microns	Thickness
2-12m & 50-200m	Width & length
Polyolefin Composite Film	Material
150microns:3-5 years; 200 microns:68 year	Life-span time
Black-and-White Film, Transparent White, Transparent Blue	Color
Anti-drip, Anti-fog, UV-resistant	Advantages

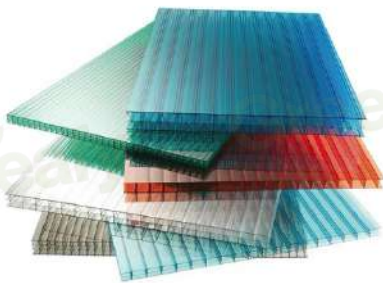
Greenhouse accessories--PC sheet cover

PRODUCT TYPE AND PARAMETERS



COLOR SELECTION

Hollow sheet has many colors to choose including blue, green, red, etc. also can be customized.



Introduction

*Eco-Friendly: Sustainable material reduces environmental impact.

*UV Protection: Two-sided coating shields against harmful UV rays.

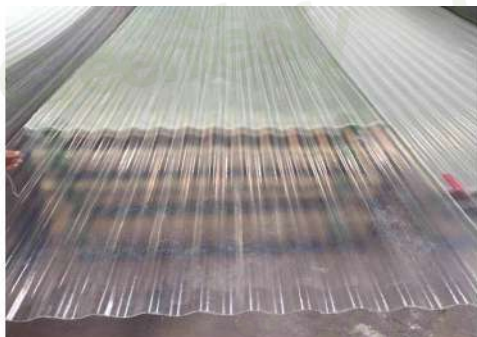
*Clear Custom Design: Transparent polycarbonate for versatile use.

*Double Wall Construction: Enhances insulation and durability.

*Wide Application: Suitable for office buildings and modern designs

◆ Structure

Product Name	Polycarbonate sheet
Thickness	3-20mm
Style	Double-layer, four-layer, Honeycomb style
Width	1.22m or 2.1m, customized
Length	5800mm, 6000mm, 11800mm. Customized.
Materials	100% virgin material
Surface	Double UV protective
Usage	Parking shelter, greenhouse, garden, rain shelter etc.
We can customize the equipment according to your requirements	



Wave-shaped tiles



900mm Trapezoidal corrugated

Introduction

- 1)Light transmission: Up to 89%.
- 2)Impact resistance: The special structure helps resist spalls or hails.
- 3)Service Temperature:Normal used in -40°c to 120°c .
- 4)Heat stability: The displacement is small when heated with metal, hard to leak.
- 5)Anti-Ultraviolet Rate: more than 99%.
- 6)Fire retardant: Adapt to the national standard, Grade and Grade .
- 7)Waterproof: 100%waterproof.
- 8)Lightweight: Low density, with lighter weight than metal material.
- 9)Protect Environment: No polluting gas is released.

Usage

- Warehouse
- Greenhouse
- Chicken/cow shed
- Industrial Plant
- Parking shelter

Product Name	FRP Roofing Sheet
Thickness	1.0–3.0mm
Width	Max 3m, customized
Length	Max 200m, customized
Color	Transparent, Lake Blue, Grass Green, Amber
Materials	Fibreglass Reinforced Plastic
Life time	5–25years
Transparent rate	20% to 90%, base on different color and thickness
We can customize the style according to your requirements	

Greenhouse accessory--Felt Grow Bags



Felt Grow Bags

Introduction

Felt planting bags—also known as fabric grow bags or non-woven planting bags—are gaining increasing popularity in nursery cultivation and home gardening, thanks to their exceptional air and water permeability and their unique "natural root pruning" effect.

Compared to traditional plastic pots, they offer distinct advantages in terms of promoting root health and reducing transplanting costs.

Growing

Small Bags (1 – 5 gallons): Suitable for growing most vegetables, strawberries, and herbaceous flowers.

Medium Bags (5 – 15 gallons): Suitable for growing roses, blueberries, and small fruit trees.

Large Bags (15 gallons and above): Suitable for growing large fruit trees and ornamental trees.

Product Name	Felt Grow Bags
Capacity	1/2/3/5/7/10/15/20/25/30/50/100/200 Gallons
Material	Polyester Felt
Thickness	1/2 mm
Application	Gardening
Warranty	2 Years
Color	Black, White, Green, Khaki and can be customized
Features	Highly breathable and water-permeable; natural root-pruning function; eco-friendly and durable; moldable form.
We can customize the equipment according to your requirements	

Greenhouse accessory--Plastic Grow Bags



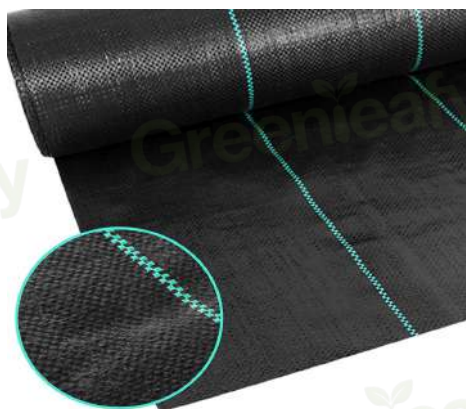
Plastic Grow Bags

Plastic grow bags are a highly practical tool in modern horticulture, combining the advantages of both traditional flower pots and in-ground planting.

Key Selling Points: Plastic grow bags optimize root growth, enable precise control over water and nutrients, facilitate easy transplanting and transport, and allow for flexible spatial arrangement.



Product Name	Plastic Grow Bags
Capacity	1/2/3/5/7/10/15/20/25/30 Gallons
Material	Polyethylene
Thickness	10–250 microns
Application	Home Gardening, Nursery Propagation
UV Protection	1–2 year
Warranty	1 year
Color	White, black
Features	Convenient and economical
We can customize the equipment according to your requirements	



Woven Ground Cover



Non-woven Ground Cover



Plastic Ground Cover

Functional Use

This woven ground cover is crafted from woven PE/PP flat yarn, boasting exceptional tensile strength and high tear resistance. It is permeable to both water and air, allowing plant root systems to "breathe." It also features UV resistance.

Plastic ground cover offers complete light-blocking capabilities and high impermeability, effectively preventing weed growth. It is impermeable to both air and water, helps retain heat and moisture, and significantly reduces soil moisture evaporation.

Non-woven ground cover (PP non-woven fabric) is produced by thermally bonding fibers; it features high water and air permeability. Soft in texture, it is gentle and does not harm plant roots; it is lightweight, easy to install, and environmentally friendly.

◆ Specification Parameter

Model	Material	Primary Applications	Advantages
Woven Ground Cover	PE/PP	Orchards, Premium Landscaping, Long-term Floral Plantings	Breathable, Root-Protecting, Long-Lasting Weed Prevention
Non-woven Ground Cover	PE Blow Molding	Vegetables, Strawberries, Early Spring Crops, Greenhouses	Warms Soil, Retains Moisture, Thorough Weed Control
Plastic Ground Cover	PP Polypropylene Fiber Hot Pressing	Nursery Pots, Tree Wrapping	Soft & Root-Friendly, Breathable, Easy to Install

Greenhouse accessories--Irrigation system



Drip Tape / Drip Line



Micro-Sprinkler / Inverted Sprinkler



Drip Arrow system



Strip sprinkler irrigation

Introduction

1. Drip irrigation delivers water directly to the root zone of crops via a network of pipes and emitters, making it suitable for use in greenhouses, polytunnels, and open-field cultivation.
2. Sprinkler irrigation projects water into the air through nozzles, creating fine droplets that fall evenly onto the ground and crops—much like "artificial rainfall." It is well-suited for irrigating large-scale field crops.
3. Drip arrows consist of a small tube connected to an arrow-shaped stake inserted into the soil, from which water flows out through the tip. They are typically connected in clusters (of 2 to 4 arrows) to a single capillary tube. This method is ideal for potted plants, vertical farming systems, and similar applications.
4. Tape irrigation utilizes thin-walled, flexible hoses perforated with small holes; when pressurized water flows through, it emits a fine mist or small jets in a linear, ribbon-like pattern. It is particularly effective for use in nurseries, seedling beds, and similar environments.

Greenhouse accessories--Cooling system



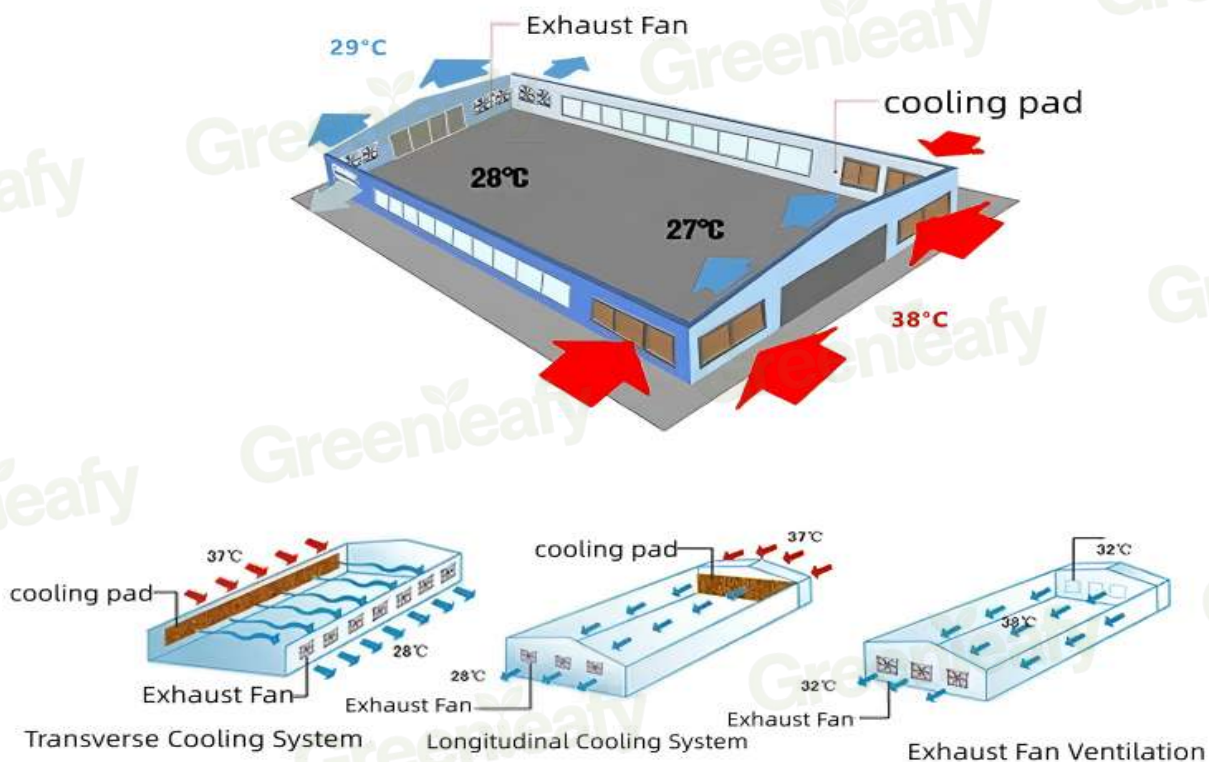
Cooling fan



Cooling pad

Working Principle

The fan-and-wet-curtain system utilizes the natural physical phenomenon of heat absorption through water evaporation; by combining this with negative-pressure ventilation via fans, it draws in hot outdoor air, cools and humidifies it, and delivers it indoors—thereby achieving a low-cost, high-efficiency cooling and ventilation effect.





Fuel/Electric Heating system



Fuel/Gas Heating system



Boiler Heating system



Electric Fan Heating system

Introduction

Greenhouse heating systems can be categorized by their heating method—including electric, natural gas, fuel oil, and biomass heating, among others. We provide clients with the most suitable solutions based on the specific regional temperatures and the size of the greenhouse.

The electric Fan Heating system and fuel/electric heating system offers rapid heating capabilities, allowing for a swift increase in the internal temperature of the greenhouse; it is typically suitable for warming smaller greenhouse structures, such as single-arch greenhouses.

Large-scale heating systems—such as those powered by natural gas or boilers—are generally suitable for greenhouses with extensive floor areas. Typically, boiler-based heating is delivered via piping installed either along the greenhouse ceiling or at ground level, resulting in a more uniform distribution of temperature.

We can provide customized services tailored to different scenarios and areas.

Greenhouse accessories--Ventilation system



Two sides ventilation system



Manual Film Roller



Top ventilation system



Electric Film Roller

Introduction

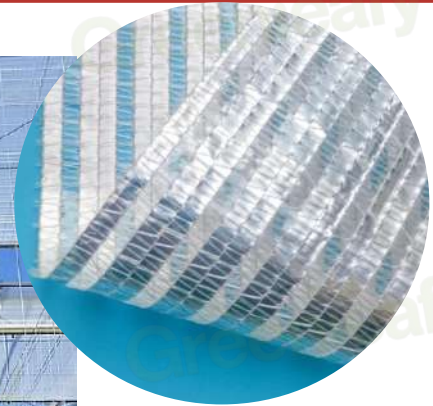
The standard configuration for the greenhouse features a side ventilation system equipped with manual film rollers; however, electric film rollers can be selected as a custom option, as can roof ventilation.

For internal ventilation, circulating fans can be utilized to accelerate airflow within the greenhouse; when paired with a fan-and-pad cooling system, this setup allows for a rapid reduction in the internal temperature.



Air Circulator Fan

Greenhouse accessories--Shade net system



Internal Shading system



Outside Shading system

Product name	Internal Shading system	Outside Shading system
Material	High-density polyethylene	PE
Shade rate	55-95%	65-95%
Width & Length	1m-6m & 100m or Customzied	1m-6m & 100m or Customzied
Color	Silver/Black/Green or cutomized	Silver/Black/Green or cutomized

Insect net & Spring Clip and Channel



Insect net



Spring Clip and Card Slot



Product name	Shade net	Spring Clip and Card Slot
Material	HDPE	Card Slot: Hot-dip galvanized steel / Aluminum alloy / Nanometer Spring Clip: Plastic-coated spring steel
Density & Thickness	8-60 mesh	Card Slot thick: 0.8/1mm
Width & Length	1m-3m & 100m or Customzied	1m-6m & 100m or Customzied
Color	White	Black/Blue or cutomized



Introduction

1. Whether it is booting or shutting down, it always broadcasts the indoor humidity and humidity in real time, and accurately controls the humidity.
2. Intelligent setting, humidity changes with heart, a wide range of 20–90%
3. Time switch machine, intelligent and convenient
4. Fault, automatic judgment, and feedback on the display for easy maintenance
5. Intelligent frost protection compressor

Usage

Greenhouse

Warehouse

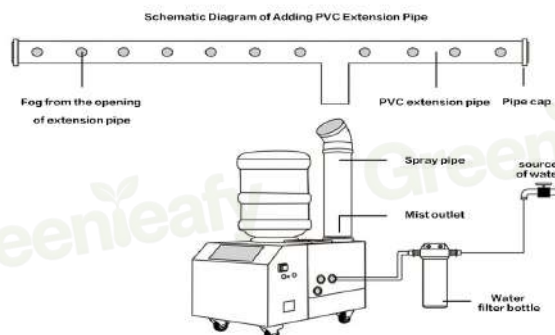
Factory

Product Name	Dehumidifier for greenhouse
Air flow	2800m ³ /h, 4800m ³ /h,
Size	600*900*1780mm, 600*1300*1820mm
Weight	128kg, 204kg
Voltage(V)	220–240V/380V, 220–240V/380V/480V
Power	4.9kw, 5.5–8.5kw
Capacity	240L/day, 480L/day
Phase	Phase 1/Phase 3, Phase 3
We can customize the equipment according to your requirements	



Humidifier

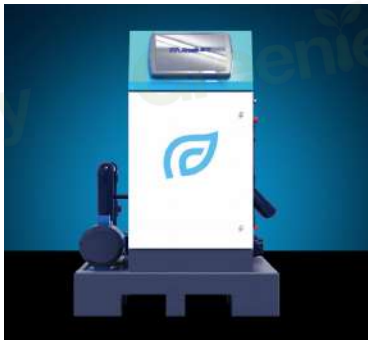
1. High-efficiency Humidification : Fast atomization speed, quickly reaching the target humidity level for greenhouse environments.
2. Uniform Mist Distribution : Ultra-fine water mist avoids leaf waterlogging and rot, ensuring even humidity around plants.
3. Energy-saving Operation : Low power consumption, significantly reducing long-term operational costs compared to traditional steam humidifiers.



◆ Structure Component

Name	Humidifier
Airflow rate	480 m ³ /h
Humidifying capacity	7kg/H
Voltage	110-240V/50-60HZ
Power	300W
Size	320*680*400mm
Weight	25kgs
Control way	Microcomputer controlling
Package size	700*460*680mm
Warranty time	1 year
Moq	1 set
Usage	Greenhouse

Integrated Water and Fertilizer Machine



Introduction

*Beautiful and exquisite industrial design Redefine fertilization machine Based on the double consideration of beauty and durability Integrated injection molding Overturn your traditional understanding of fertilization machine.

*Double EC/pH design guarantee crop safety Sensor deviation alarm, large deviation automatic downtime, safeguard crop safety.

*Oversized touch terminal operation is more silky It can be used not only as a man-machine interface, but also as a gateway. Provide 4G / network port / WiFi and another networking methods to solve the poor network in the agricultural field.

Usage

Greenhouse

Farm land

Garden

Product Name	Agricultural Irrigation Fertilizer Machine
Size	L1226* W910* H1380mm
Weight	130kgs
Power	1.1KW/3KW/4KW
Capacity	600/h/channel(fertilizer injection capacity)
Pressure	2.7bar/3.2bar/3.4bar(Pipeline pressure)
Mixer	110LMixing barrel
Water Lift	27m/32m/34m
We can customize the equipment according to your requirements	

Single-Span Greenhouse – Chile

Project: Table grape early production, Central Chile

Solution: Export of galvanized steel single-span film greenhouse (span 8m, height 4m). Designed for wind load up to 100km/h. Pre-drilled bolted structure for easy sea freight and on-site assembly.

Result:

Grape harvest advanced by 20 days, achieving higher export prices

Fast installation, 40% shorter construction time

Repeat order for 5ha phase two



Customer's feedback

Multi-Span Greenhouse – Chile

Project: High-value blueberry export, Northern Chile

Solution: Export of 2-span gutter-connected greenhouse (span 9.6m, gutter height 5m). Equipped with ternal shading, roll-up sides, fan & pad cooling and Strip sprinkler irrigation. Double anti-corrosion coating for coastal environment.

Result:

Harvest window extended to 4 months, premium flower rate at 85%

30% water saving under desert climate

Recognized as a regional demonstration project

